



OUR SERVICES

- **Glamping and lodge design in remote areas**

We are specialized in canvas design and buildings to be placed in the wild and remote areas which require use of temporary structures design

- **Sustainable & BioArchitecture solutions**

We have experience on design in remote and dry areas where is important to use the nature to provide electricity and water. In our designs we always incorporate our experience and provide eco friendly designs where attention to save resources is at our first place. With qualifications in this field and constant updating in accord with the most recent researches

- **Render views and projects visualization**

For us a good project could lose value if not well presented. We pay attention onto presentation and visualization of our projects and we help other projects to be better visualized and presented. We use many software CAD and 3D to provide a final product that can come in many shapes such as a presentation book, a video or images that tell the story of the project

- **Landscaping design**

We are passionate on landscaping design. For us any open space is a challenge. We like to study the indigenous species and put together spaces that tell the story of the place

- **Surveys of existing buildings**

We are equipped to make any kind of survey of existing structures (recent or historical) where we provide a real image of the building as well as the material used and state of deterioration present on them. We also advise on intervention of repair and sanitation

- **Technical drawings CAD**

Any kind of technical drawings with many programs we can use such as ArchiCAD, AutoCAD, Revit etc..

- **Residential, Hospitality & Commercial buildings design**

We have experience in this kind of design where we feel strong. Private residential, luxury lodges and hotels, commercial buildings

- **Submissions with Authorities**

Botswana, Italy and Switzerland registered Architects

WHO WE ARE

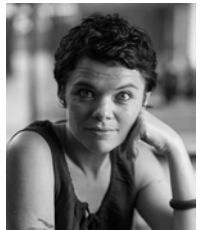
ELENA BELLAVITE ARC Registered Elena has a Master Degree in Architecture at the Polytechnic of Milan, Italy. She started ARCHIDEA-Architects in Lugano Switzerland in 2012 and followed several projects in Switzerland as main Architect and Project Manager. In Botswana, Elena started ARCHIDEA-Architects Africa with main base in Maun. Elena is currently found at the main office in Maun or on site in Kasane, Botswana.



CHIARA AIROLDI has a Master Degree in Architecture at the Faculty of Architecture of the Polytechnic of Milan, Italy. She worked in various architectural firms in Italy, and participates at Architects without borders' project in Togo where she was active involved for 4 weeks. She participates many workshops regarding natural and eco-friendly construction Techniques as well as a 2 weeks workshop with Arco' about the use of rammed earth in contemporary Architecture. Chiara lives in Milan, Italy where she is part of the European office between Italy & Switzerland.



ARIANNA FRANCONI Arianna has a Master Degree in Bioclimatic Architecture and Environmental Protection at the Faculty of Architecture of the University "La Sapienza" of Rome, Italy. She worked in various architectural firms, including Zaha Hadid Architects, until she was offered the chance to travel to Africa in 2009 on a UN consultancy program. Arianna has travelled across many African countries, including Rwanda, Sudan, Cabo Verde, Malawi, Madagascar. In Botswana, Arianna has project managed several construction projects. Arianna is currently found at the Gaborone office.



BAKANG MOSWEU Interior Architect and 3D designer graduated from Limkokwing University in Gaborone, Botswana with 4 years of experience with ARCHIDEA. Currently based in Maun, Botswana



OUR STORY

ARCHIDEA is an Architectural firm born in Lugano, Switzerland in 2012.

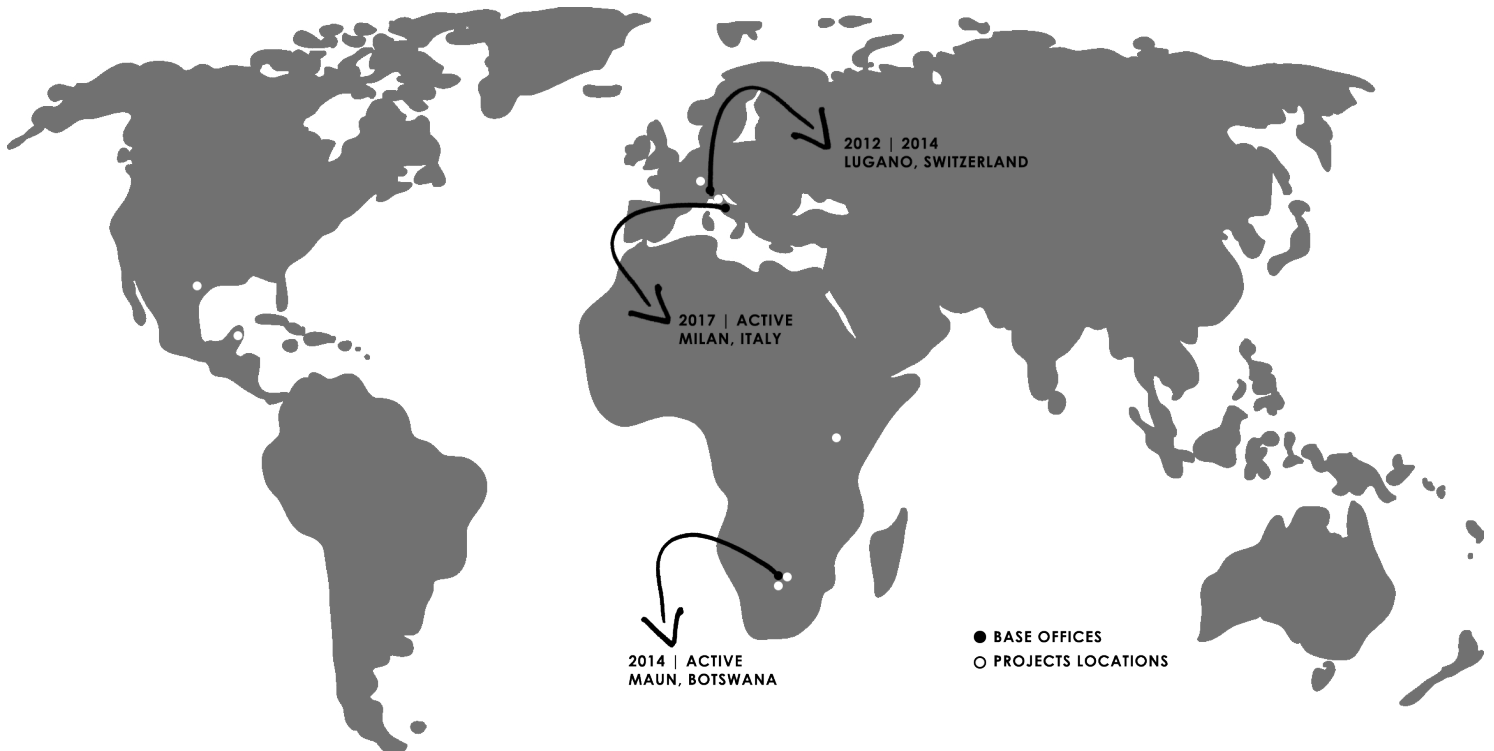
In 2014 the Company main base moved to Africa, in Botswana, with an interest in working with emerging economies and Countries.

Since then, the company has developed a main office in Maun (Botswana's Capital of tourism) and secondary offices in Kasane and Gaborone (Capital of Botswana).

In 2017 ARCHIDEA also opened a new office in Milan, in order to follow projects in Italy and Europe.

Since 2015 the office in Botswana hosted a lot of architecture students both from Italy and Botswana because we strongly believe in future generations and new ideas to debates together.

This brought us to participate in worldwide architectural competitions and made us update our skills with courses and seminars year by year as well as to work as a TEAM.



WHY CHOOSE US

Thanks to our experience in both African and European realities, we perfectly know **different markets and cultures**.

We all have chosen to do what we are doing because **we are passionate** about Architecture and you will surely notice it in our projects.

At the same time, we keep on researching, studying and taking part in Worldwide Architectural Competition, in order to always be aware of what happens in the **World scenario** and to adapt ourselves to it.

OUR MISSION

Nature & Memory are our teachers and we learnt from them How to design with the **lowest environmental impact**.

We always pursue a design that creates modern and contemporary living spaces that are respectful of nature and **sustainable** for the environment.



OUR VISION

We believe that working in contact with cultures from **different backgrounds** is the key to define a new and stimulating professional path. We would like to leave a positive mark in the urban realities of tomorrow, to consolidate an **environmentally friendly** design and construction method, without forgetting that the secret to progress is **learning from the past and from Nature**.



OUR VALUES

Listen to Nature and what the location suggests to us with **personalized designs** that are never the same

Respect nature with most **sustainable designs**

Offer **our best skills** in every design



PROJECTS - AFRICA

HOSPITALITY

Jackalberry Chobe Tented Lodge - Kasane - Botswana 2017 - 2018
(www.jackalberrychobe.com/)

O'Bona Moremi Lodge - Khwai - Botswana 2019 - 2019 (www.obona-lodges.com/)

Kazikini Luxury Lodge - Kazikini - Botswana 2019 - on going

Omogolo Private Lodge - Gumare - Botswana 2019 - on going

Eco lodge - Shorobe - Botswana 2020 - on going

First Choice Apartment new extension - Maun - Botswana 2020 - on going

Garden Lodge renovation and extension - Kasane - Botswana 2020 - on going
(www.thegardenlodge.com/)

RESIDENTIAL

Water Villas Cottage - Maun - Botswana 2018 - 2019

Phazama Farm house - Maun - Botswana 2017 - 2019

Private Residence of the Mayor - Gaborone - Botswana 2019 - on going

Private Residence - Gaborone - Botswana 2019 - on going

Private residence renovation - Maun - Botswana 2016 - 2017

COMMERCIAL

Nhabe Museum New Craft market- Maun - Botswana 2018 - 2019

New shopping mall - Maun - Botswana 2020 - on going



PROJECTS - EUROPE & WORLD

Mountain chalet renovation - Osco - Switzerland 2015 - 2016

Beach photographers shop - Tulum - Mexico 2018 - 2018

Staircase design - George Town - Cayman Island 2019

Court house refurbishment - Milan - Italy 2019 - on going

Merge of two apartments - Milan - Italy 2020 - on going

Roof top apartment refurbishment - Nuremberg - Germany 2020 - on going



PROJECTS SELECTION

ECO-LODGE - Farm House - Shorobe - Botswana

PROJECT INFO

TOT SQM: 150 sqm 3 bedroom farm house in the village of Shorobe part of a eco-lodge project design with 6 tented rooms and landscaping design

MATERIAL: wood, corrugated iron sheets, aluminium & glass

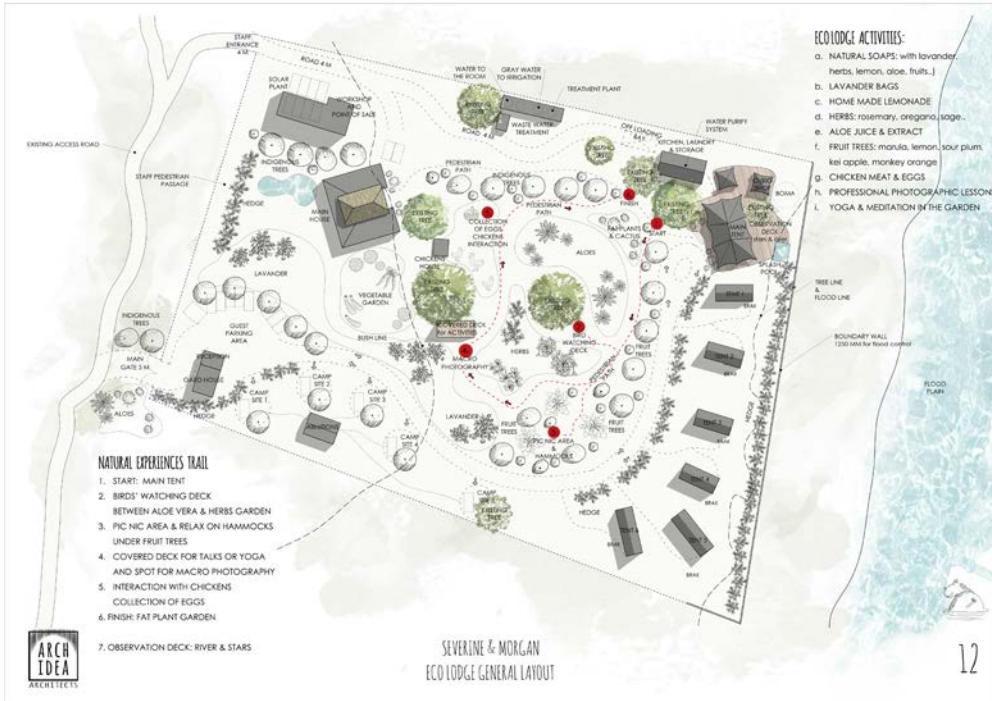
DESCRIPTION: eco-lodge with attention to re use of waste water for irrigation & use of solar power only. Tents are designed to capture the breeze and be cooler. Eco lodge production of indigenous fruits and herbs and sustainable food for the lodge

STATUS: design



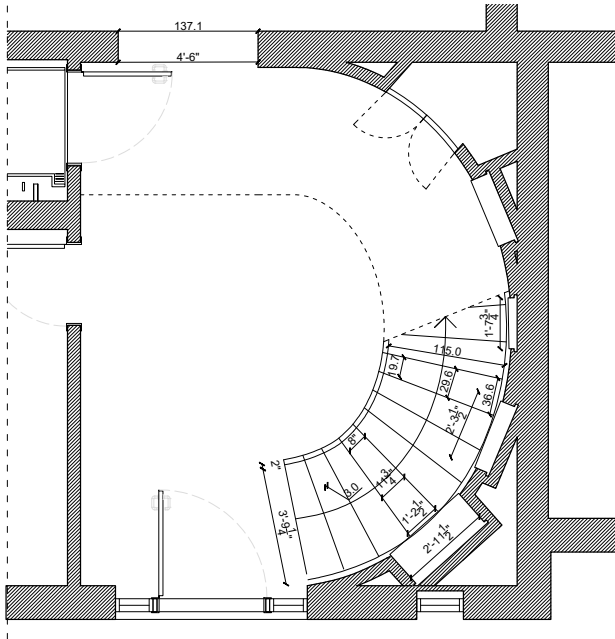
PROJECTS SELECTION

ECO-LODGE - Guest accomodation & landscaping - Shorobe - Botswana



PROJECTS SELECTION

Staircase design - George Town - Cayman Islands



PROJECT INFO

TOT SQM: 3 sqm wooden staircase

MATERIAL: wood, steel & glass

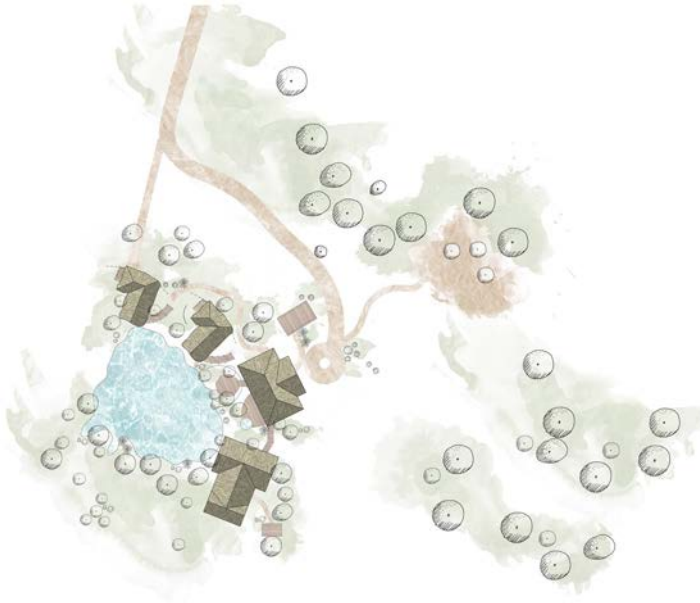
DESCRIPTION: new staircase design

STATUS: built



PROJECTS SELECTION

Private Bush Lodge - Tsau village - Botswana



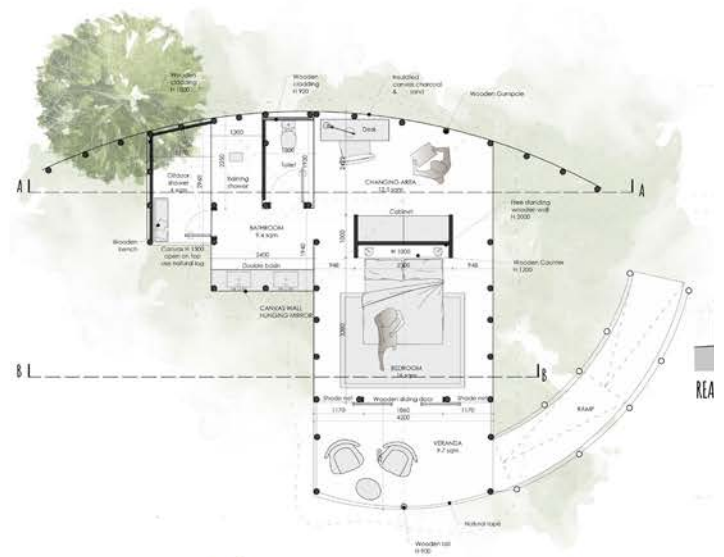
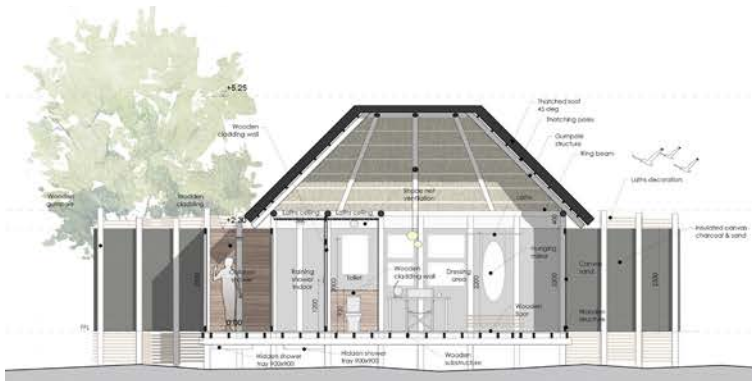
PROJECT INFO

TOT SQM: 300 sqm private lodge

MATERIAL: wood, canvas, grass & shade net

DESCRIPTION: 3 new luxury accommodations and a main area with Jacuzzi, bar and kitchen overlooking on a natural pond where wildlife comes to drink

STATUS: design



PROJECTS SELECTION

Jackalberry Chobe Lodge - Kasane - Botswana



PROJECT INFO

TOT SQM: 2000 sqm of new luxury tented lodge

MATERIAL: wood, steel, grass, canvas, aluminum & glass

DESCRIPTION: 16 tented accommodations of 30 sqm each, a main commune area with bar, restaurant & infinity pool overlooking at the Chobe River in Kasane.

STATUS: built



PROJECTS SELECTION

NHABE Museum New craft market - Maun - Botswana



PROJECT INFO

TOT SQM: 35 sqm craft market buildin, 200 sqm open deck market space

MATERIAL: wood, corrugated iron sheets, aluminum & glass

DESCRIPTION: 4 new craft shops and a wooden open deck for outdoor market & shows in the Museum of cultures in Maun. Low budget project.

STATUS: built



PROJECTS SELECTION

GABORONE, Mokolodi Private house renovation - Gaborone - Botswana



PROJECT INFO

TOT SQM: 210 sqm

MATERIAL: bricks & cement, wood, grass, aluminum & glass

DESCRIPTION: A private house in mokolodi where we redesign the all roof to be traditional grass and renovate interiors to be modern and light for the new owner.

STATUS: built



PROJECTS SELECTION

O BONA MOREMI Lodge room renovation - khwai - Botswana



PROJECT INFO

TOT SQM: 30 sqm each room

MATERIAL: canvas, wood, shade net

DESCRIPTION: A bush lodge in the Moremi game reserve needed a budget renovation of the look of their room. Reusing the existing standard meru tent we created a ne laths skin to go on top. This serve to create more shade on the canvas roof and a new look

STATUS: built



PROJECTS SELECTION

IDEA TENT Accomodation - MAUN TRADE EXPO 2019 - Botswana

PROJECT INFO

TOT SQM: 32 sqm

MATERIAL: canvas, wood, shade net

DESCRIPTION: A guest accomodation composed by a wooden A frame and canvas ten. This fit into a glamping scenario and it is a model tent that we designed. It is available in 4 different themes of colours and textures. We are actually using the model with grass roof for a new lodge in Moremi area.

STATUS: design



CERTIFICATES & QUALIFICATIONS



Master Degrees in **Architecture**

Master Degree in **Bioclimatic Architecture and Environmental Protection**

Bachelor Degree in **Interior Design**

Certificate in **Landscaping Design**

Certificate in **Sustainable & BioArchitecture**

Essential Project Management

Registered at Architects Register Council, Botswana

Registered at Ordine degli Architetti di Milano, Italy

Software skills: Autocad 2D & 3D, Lumion, Cinema 4D, Sketchup, Archicad, Revit, Photoshop, Illustrator, InDesign, Photosketcher, Real Time rendering with Enscape

ARCHITECTURAL COMPETITIONS

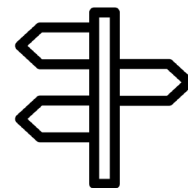


2020_**AFRICAN HOUSE DESIGN COMPETITION**_ on going

2020_**TINY LIBRARY**_ TOP 50 Projects selected
(<https://competition.volzero.com/competitions/result/11>)

2013_**POST QUAKE VISIONS**_FINALISTS
(<https://www.youngarchitectscompetitions.com/competition/post-quake-visions#mentions>)

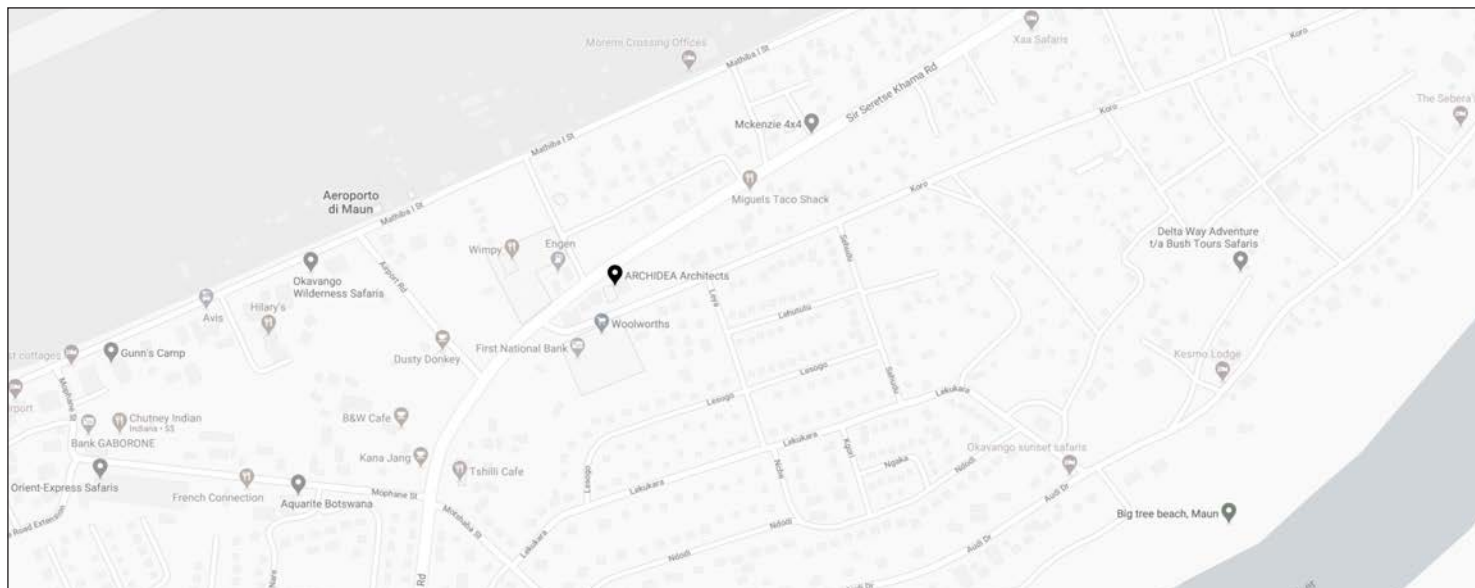
CONTACTS



w. www.archidea-architects.com
e. team@archidea-architects.com

BOTSWANA:

P.O. Box 894, Maun
Botswana, Africa
New Mall
Maun, Botswana
t. +267 76 77 39 99



ITALY:

via Guerciotti 33
Legnano (Milan), Italy
t. +39 348 1491581